

L'ANSE CREUSE HIGH SCHOOL BAND

PARENT HANDBOOK



2007 -2008 SEASON



WELCOME – WELCOME – WELCOME

Welcome to the exciting and rewarding experience of being a band parent! As a band parent you are about to embark on a great adventure. High School band is a community in itself, with a government (band director, associate directors, sections leaders), a unique language (what is the Pit and who is MCBA and why are they monopolizing my Saturdays in the fall?), a treasury system (is there anything left in my student account to pay for band camp?), a transportation system (Who or what is Big Blue and Little Blue?), a clothing outlet (with band attire for the whole family) and best of all – a support system for parents and students to help each other and have the time of their lives!

You will witness your child working harder and longer than you ever thought possible and you will be filled with pride and admiration when they march onto the field or onto the stage and give 110% and perform at a level of excellence that goes beyond the expectation of a high school band.

The L'Anse Creuse High School Band community needs the support of all of its members to maintain that level of excellence. For parents and students, band life can be confusing and overwhelming. The purpose of this handbook is to help calm your anxieties by serving as a reference and a guide. Please feel comfortable in contacting any band staff or band booster member if you have questions or need assistance.

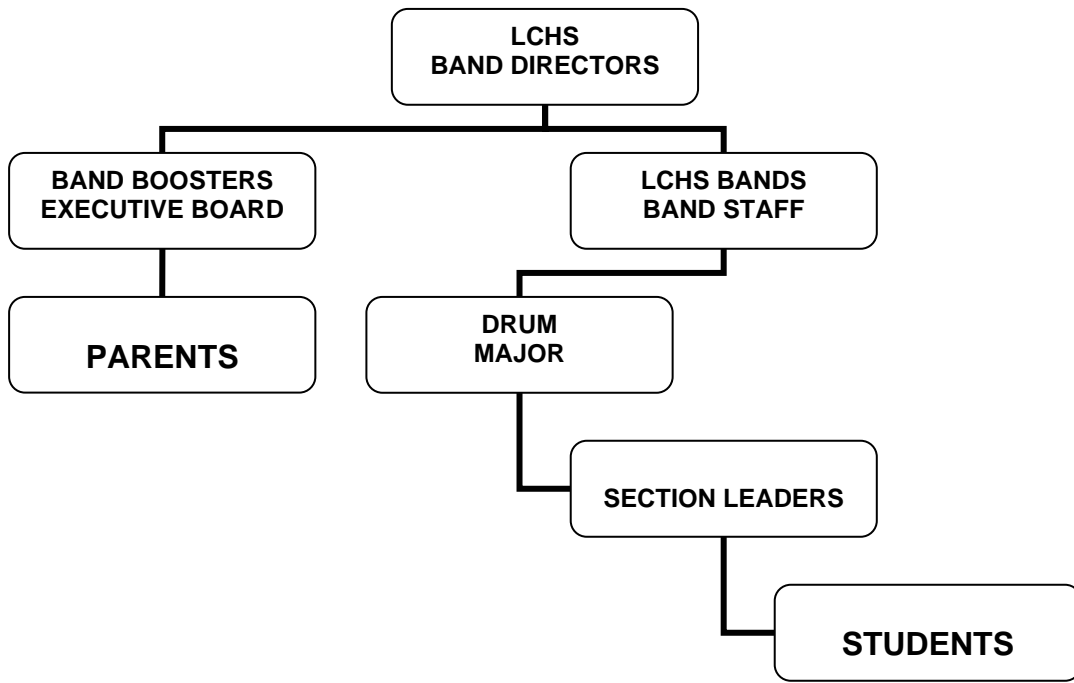
Congratulations on becoming a band parent!

TABLE OF CONTENTS

<i>LCHS Band Leadership.....</i>	<i>1</i>
<i>Understanding the L’Anse Creuse High School Bands.....</i>	<i>2</i>
<i>L’Anse Creuse High School Band Boosters.....</i>	<i>4</i>
<i>Marching Band & Marching Competitions.....</i>	<i>6</i>
<i>Uniforms.....</i>	<i>7</i>
<i>Pre Band Camp And Band Camp</i>	<i>9</i>
<i>Oh No! Not More Fund Raisers.....</i>	<i>11</i>
<i>Other Band Related Expenses.....</i>	<i>14</i>
<i>Additional Information and Resources</i>	<i>15</i>
<i>Band Camp Packing List.....</i>	<i>17</i>
<i>LCHS Band Staff and Band Booster Directory.....</i>	<i>18</i>

LCHS

BAND LEADERSHIP



UNDERSTANDING THE L'ANSE CREUSE HIGH SCHOOL BANDS

In the fall, all bands combine to form the L'Anse Creuse High School Lancer Marching Band.

Marching band performs in marching competitions, half-time shows at home football games, parades, as well as other performance experiences. Requires attendance at preband camp and band camp. Marching Band practice and competitions is from August through November. Travel to competitions is required.

Freshman band is the concert ensemble comprised of all freshmen band members at LCHS. In this class the members are introduced to High School level literature and work on the fundamentals of excellence in musical performance expected from the Lancer bands.

Symphony band is comprised of students in grades 10-12; membership is open without audition and is offered at two different class periods during the day. The Symphony Band is of the traditional large instrumentation (80+ members) and plays advanced wind/band literature from all periods.

Wind Symphony is a wind ensemble available to students in grades 10-12 at LCHS through audition only. This premier ensemble plays an advanced level of wind literature from transcriptions or from contemporary composers.

Honors Band is where students are given the opportunity to audition for and be recognized by a number of honors bands throughout the State of Michigan sanctioned by Michigan Band and Orchestra Association (MSBOA) and various universities.

Jazz Bands are comprised of dedicated students that meet for credit during the 7th period (after hours) of the school day. There are two jazz bands – jazz band white and jazz band blue, differentiated by level of experience. The band rehearses and performs jazz standards, studies jazz theory and develops improvisational skills.

Color Guard is the section of the marching band that adds dance, flash and color through spinning flag and rifle, dance and props. It is open to all high school students and no prior experience required.

Inspiration is an independent winter color guard program of the LCHS band and takes place from January through April. Its role is to offer color guard winter season activities as well as training for the marching color guard season.

Solo and Small Group Ensembles perform in coordination with scheduled band concerts and the District and State Solo and Ensemble Contest. Although not required, it is strongly recommended that students enhance their musical experience by participating in Solo and Ensemble.

Music Theory is open to any interested student and is offered at three levels from music concepts to advance composition and AP college credit.

Drum Major conducts and is part of the field command personnel of the marching band. Represents band program at LCHS as student leadership. Students must audition for drum major and summer leadership camp is required.

Section Leaders is the student leader of each performing section of the band. Interviewed position.

Sectionals - students in specific sections of the band practice as a group after school. Attendance required.

Eastside Fury is an independent percussion ensemble open to LCHS students as well as students from other schools. Auditions are held during the month of October.

Outside of our Traditional Offerings; Our Chamber music program includes brass, woodwind and percussion choirs and also a handbell choir.

Private Lessons can be arranged through the band office and are **HIGHLY** recommended for the success of the student and the overall band program.

CONCERTS

There are two major concerts held during the school year. One in early December and one in early May. Concerts are held in the John R. Armstrong Performing Arts Center on Gratiot, south of Hall Road. The December (winter) concert is free admission, however the May (spring) concert has a small admission charge. Money received from the spring concert is used to help offset expenses for scholarships. Other concerts may be scheduled at the director's discretion.

TRAVEL AND TRANSPORTATION

Travel is required for all band members. Students are required to travel with the LCHS band using travel accommodation made by the band director. Any changes in transportation must be approved by the director.

L'ANSE CREUSE HIGH SCHOOL BAND BOOSTERS

WHO AND WHAT ARE THE BAND BOOSTERS?

The LCHS Band Boosters is a non-profit organization that is governed by a constitution and by-laws comprised of band parents or other interested adults. ***If you have a child in band YOU are a band booster!***

WHAT DO THE BAND BOOSTERS DO?

The LCHS Band Boosters support all facets of the L'Anse Creuse High School Instrumental music program by (1) establishing a closer relationship between home and the band activities of the school. (2) Assists in providing financial support for activities, music equipment and materials (not provided for in the regular school budget), educational trips, band camp and scholarships as funds allow. (3) aid and assist the band program and to encourage parent and community involvement in all aspects of the instrumental music program that fosters educational development of the students and to (4) conduct fund raising activities to support all of the above.

WHY ARE THE BAND BOOSTERS IMPORTANT TO THE PROGRAM?

The Band Director is given limited resources to support the band program and therefore the LCHS Band Program relies on parental and Band Booster support to not only maintain its current level of programming, but also to expand to a higher level of excellence. The amount of parental involvement in the LCHS Band Boosters is directly proportionate to the quality of the band program.

HOW CAN I GET INVOLVED IN THE BAND BOOSTERS?

Meetings are held on the first Thursday of each month (September – June) at 7:15 p.m. in the band or choir room, whichever is available. A listing of the Band Boosters officers and their telephone numbers can be found at the end of this booklet.

Parent volunteers are the backbone of the LCHS band program! Your child would not have a band program without the support of parents. Get involved!

BAND BOOSTER COMMITTEES

- Transportation & Equipment. Includes movement of band equipment and props. Positions include tractor/truck drivers (must have CDL license), parents to pull trailers with their trucks, mechanics (small engine, hydraulic, automotive), woodworkers, electricians, prop designers (a concept is given, need ideas to make it), prop builders (work with wood, cloth, paint, rope, PVC tubing, wheels, etc.), parents to help with PIT (non-marchable band equipment) during performances, parents to help move the props onto the field during performances.
- Chaperones. Parent chaperones are needed for band camp, band competitions.
- Sewing. Parents needs for sewing assorted costumes, flags.
- Props. See above under Transportation & Equipment
- Marching Uniforms
- Concert Uniforms
- Band Raffle
- Ticket sales
- Lancer Marching Band wearable
- Other committees/fund raisers as they develop

BAND BANQUET

The Band Boosters sponsor a band banquet every year in May to celebrate and honor all band members along with their parents. Seniors are given special recognition and are eligible for a complimentary band banquet ticket when all accounts are paid; all raffle tickets sold for each year in band and items returned to the band. Awards and recognition for all band members and senior scholarships are presented at the banquet. Prizes, memory booklets, silent auctions, dancing and good food are all part of the celebration.

The annual band banquet is a self-sustaining activity and there is a cost associated with attending the band banquet. This is **not** a fund raising activity. Ticket price includes, but is not limited to costs associated with the evening such as food and beverages, all decorations and awards. Every effort is made by the banquet organizers to keep costs to a minimum, while still having a memorable event.

MARCHING BAND & MARCHING COMPETITIONS

In the fall, all bands and color guard combine to form the L'Anse Creuse High School Marching Band. Students who do not participate in Marching Band are not eligible to participate in any other band. It is highly recommended that all freshmen participate in marching band. For the few freshmen that have some verifiable conflict, there is an alternate hour in which they are assigned to play. All 10th, 11th, and 12th grade students must be a member of the Marching Lancers. The Marching Band performs half-time shows at all home football games and marches in the homecoming parade.

The Marching Band also participates in the Michigan Competing Band Association (MCBA) competitions where the band as a group and individuals are judged, rated and based on the overall rating during the marching season, may be eligible to compete in the MCBA State Championship. Ratings are based on music performance of individual and ensemble, visual performance of individual and ensemble and general effect of music and visual. High Schools throughout the State of Michigan compete against each other and schools are grouped into 4 flights based on the high school population. LCHS Marching Band competes in Flight II. The top ten bands in each flight are eligible to compete in the State Championship. MCBA competition schedules, scoring, rankings and other information can be found on their website: www.michcompband.org

These performances are intricately choreographed and include elaborate props, special effects and involve an incredible amount of hard work and dedication on the part of students, staff, and parent volunteers. LCHS Marching Band has consistently made it to the State Championship.

Many hours of practice go into making a high quality show. Some sectionals start practicing in May and continue through the summer with pre-band camp, band camp and then rehearse throughout the marching season.

COMPETITIONS

Schools throughout the State host MCBA sanctioned competitions. Competitions are generally held on Saturdays. There are expenses associated with these competitions including show entry fee (individual and group), instructional staff, bus transportation, show design, equipment and prop transportation, as well as food and refreshments for the band members. The LCHS Band Boosters assume (through fund raising) a large portion of the expenses. Donations of bottled water and fruit for each competition or money to purchase them are gratefully accepted from each band member. Band members may need to bring money for lunch and/or dinner.

Parents are encouraged to attend the competitions to cheer and support the students. Dates, times and maps are posted in advance of each competition. There is a spectator entry fee and a charge for programs and souvenirs. Advanced tickets may be purchased from the Band Boosters. Proceeds from advance ticket purchases go back into the Band Booster account; proceeds from tickets purchased at the competition go to the hosting school.

UNIFORMS

MARCHING BAND UNIFORM

The school provides the basic uniform with parents purchasing shirts, marching shoes and for some members white gloves. There is a uniform fee of \$75 for new members which include cost of gloves, show shirt, marching shoes and dry cleaning expenses. A uniform fee of \$50 is charged for returning students which includes show shirt, gloves and dry cleaning expenses. The marching uniform fee is part of the band camp payment. The uniform chairperson will provide information about when uniforms are being distributed and order forms for shoes, shirts and gloves. These uniforms are very expensive and it is expected that the students will take proper care of them and return them in the same condition that they were received.

Marching uniforms will be returned to the band room after each performance.

The marching band uniform consists of the following

Show shirt (t-shirt printed with the current marching band show title and logo on the front with competition dates on the back). Parents often purchase a show shirt to wear to band competitions to show their support of the band. Approximate cost is \$10.00

Marching jacket, sequined sash, marching bibbers, raincoat, garment bag, helmet, and plume.

Gloves. Approximate cost is \$5.00

Marching shoes. Approximate replacement cost is \$27.00. Used shoes as replacements (for forgotten shoes at a competition) \$5.00

Black socks purchased by parents

** Members of the Pit (students who play large nonmarchable instruments and equipment on the sideline) do not wear gloves or helmet and plume.

COLOR GUARD UNIFORM

The uniforms for color guard are custom designed for each show season that the marching band participates in. The uniform fee that is paid with the band camp fee (\$75 new, \$50 returning) will be applied toward the color guard dues. Any balance remaining is the responsibility of the color guard member and this can be anywhere from \$50 - \$150. Separate fund raisers are available to help cover the cost.

CONCERT UNIFORM

Concert uniforms will be issued after the marching season. The uniform consists of tuxedos for the gentlemen and jumpers for the ladies. Parents will be responsible for purchasing tuxedo shirts (approximate cost \$20.00). Black dress shoes and black socks are required (not provided). Ladies are expected to wear closed-toe black dress shoes, no platforms or oversized shoes are allowed. There is a \$25 deposit that is charged to freshmen students and will be refunded at the end of their senior year, provided that all uniforms and school equipment are turned in.

Parents are responsible for having concert uniforms dry cleaned as needed.

Seniors are required to turn in their concert uniform with a dry cleaning receipt attached to the bag before commencements. Seniors who do not turn in their concert uniform by the designated day will be required to pay for replacement of the uniform.

9th, 10th, and 11th grade students **do not** turn in their concert uniform at the end of the school year. Students are expected to keep and properly

maintain their concert uniforms throughout their band program participation. A current cleaning receipt must be turned in to the band room by the last day of school each year to show that the uniform is being properly maintained.

A designated envelop for dry cleaning receipts will be posted on the uniform room door in the band room.

If you need to exchange the uniform for a different size you should contact the uniform chairperson (see directory). A designated day and time will be set aside for fittings and hemming.

PRE BAND CAMP AND BAND CAMP

Pre band and band camp are held during the summer months and is where the marching band practices for the marching season. Attendance is mandatory. More than 100 hours of instruction will be given during the two weeks of camp. This is equivalent to twenty weeks of normal class time. It is extremely difficult if not impossible to expect to catch up if students are not present. Students who must miss a substantial amount of camp for pre-excused reasons may become alternates in the pre-game and/or half-time shows. This is necessary to remain fair to those students who are present. It is very difficult and frustrating for students to try to teach drill when students are missing.

A detailed list of items to bring (and not to bring), an itinerary for departure and return dates and other useful information will be sent to parents in advance of pre camp and band camp. **Information listed below is a general summary of pre camp and band camp policies. Please carefully read carefully information that is sent to you from the Band Director.**

Pre-camp is mandatory for all members at their designated rehearsals. Pre-camp will set the attitude, work ethic and tempo for the camp experience and even the entire season. In the event that a student does not attend pre-camp and has not notified Mr. Hilton in advance, the student's spot will be removed off of the rosters and their name placed on the schedule change list with the counseling office. Rehearsals will consist of indoor/outdoor marching rehearsals as well as sectional time and full music rehearsal. Students should bring a one gallon water cooler for drinks on the field. NOTE: It is essential that students each have their own water cooler and not share with other students. This is for health and sanitation reasons.

The 2007 band camp will be held at Blue Water Campground, located just north of Lexington, Michigan. The camp facilities includes student housing in dormitory style buildings and also “cabin” type rooms. Girls will be housed in the dormitory and boys will be housed in the cabins. Community shower facilities are located at both areas. Parent chaperones will be housed between the male and female side of camp.

Dining hall and indoor rehearsal facilities/recreation hall are available daily. Cafeteria style food service, featuring a selection of foods, open line with seconds allowed. All meals provided by the certified camp staff. Vegetarian meals can be provided if Mr. Hilton is notified in advance of departure. Parents should please encourage your child to eat three substantial meals a day while at camp. Band camp is not a time for your child to worry about their weight. Students will work many hours each day in the sun and will work off many more calories than they usually do. It is imperative that students eat properly. Failure to do so may cause sickness, nausea, weakness and fainting spells. The chaperones are there to help ensure that the students have a successful camp experience. If they become aware of a student that is not eating on a regular basis, the parents will be notified.

What to Bring to Band Camp

A band camp packing checklist is included in the handbook. (Note: students cannot rehearse in jeans throughout the entire marching season!) Two pairs of supportive broken in athletic shoes, in case one gets wet, are recommended and two pairs of sweat socks per day. Shoes and socks are required at all times. Students should bring a small amount of money to be used to purchase pop, juice, bottled water and snacks during break times and at night. All other meals at camp are paid for by the camp fee. Students should not bring large sums of money – it is asking for problems. Cell phones, pagers and laptop computers are discouraged.

Medical Information or Concerns:

All students must have a completed medical form and permission slip turned in prior to departing for band camp. Please alert the director in advance of any medical conditions which may be of importance during the camp. All students who take prescription medication should check their medication with the camp nurse prior to leaving for camp. (Insulin needles will also need to be checked in to the nurse for the duration of camp. Please bring your own Tylenol, ibuprofen, allergy medication (prescription or non such as Allegra, Sudafed or Benadryl). Students who required self-medication items such as inhalers, epi-pens, may carry them during camp.

Parent Visitation

If you plan on being in the area to visit, Mr. Hilton must have a written note stating the day and time that you will visit. Visitors who have not notified Mr. Hilton prior to the group leaving for camp will not be allowed on the property. This is for the safety of the students. The visitation policy allows for one visit per family. Students will not be allowed to leave the camp for any reason. Please do not ask. Students may visit with family members during mealtimes or during free time. At all other times students will be expected to be at the assigned activity with the remainder of the band.

Although it is recognized the desire to do something nice for your child while at camp, please remember the Director's emphasis on fairness and consistency. Most students will not have visitors at camp and therefore it is not appropriate to give your child snack food, etc., unless you would like to provide for the entire band.

Band Camp Rules and Restrictions

Students and parents should make themselves aware of the rules of conduct written out by the L'Anse Creuse High School Administration and the L'Anse Creuse High School Band Handbook. Additional rules and restrictions related to band camp will be distributed to students and parents prior to departure. Anyone caught violating the rules of conduct or rules and regulations of band camp will be sent home immediately at the parent's expense and removed from the band program.

“OH NO!! NOT MORE FUND RAISERS!!

Unfortunately fund raisers are necessary to maintain and enhance your child's band program! Band is not a “pay to play” activity like sports – all students may participate in band. However, a high quality band program costs money. In a perfect world there would be unlimited funding for instruments, band uniforms, transportation, awards, music, band camp, trips, and refreshments for practices and competition. Expenses for marching season alone include show design, music, sectional instructional staff, props, special uniforms, flags, equipment operation and transportation fees, and competition entry fees. Regretfully we don't live in that perfect world, so yes. We must have fund raisers.

Fund raisers are directed by the Band Booster organization. Proceeds from fund raisers are divided between the participating students and the Band Boosters. Unless otherwise stipulated, students who participate in fund raising activities receive two-thirds of the proceeds which goes into their own activity account and the Band Boosters receive one-third of the

proceeds. The money in the activity account can be used for band camp and band travel expenses only.

Please note – the activity account is not considered a “bank account”, but is money set aside from fund raisers that may be used to help offset certain band expenses. Any unused money reverts back to the Band Boosters general fund.

TYPES OF FUND RAISERS

EXPECTED FUND RAISER

Raffle Tickets – This is our major fund raiser for the year. Without the success of this raffle our marching program would not continue at the outstanding level it currently is.

LCHS Bands receive most of their funding through the Band Boosters and not the school district. Most of these funds are used during marching season to cover transportation, uniforms, instructors, flags, props, scenery, competition entry fees and many additional expenses.

This year we need to raise more than \$60,000 to support the various band programs. If all raffle tickets are not sold, the success of your child’s band program will be in jeopardy!

The cost per ticket is \$10 and each student is issued twenty raffle tickets. It is expected that all students will sell all 20 tickets. The proceeds from the first twenty raffle tickets sold will be placed in the Band Booster account. The students will receive \$5.00 in their activity account for each additional ticket sold. Senior students who have sold all raffle tickets for each year in band will not have to pay for their own band banquet ticket and will be eligible to apply for a Band Booster scholarship.

Tax deductible donations of \$200 per child in band, or a combination of raffle tickets sold plus a donation which equals \$200 can also be made in place of ticket sales (which will keep students eligible for scholarships, awards, and a free ticket to the band banquet during their senior year).

There are student’s incentives to help motivate them to sell all of their tickets. Additional details will be provided at the time tickets are issued to students.

OPTIONAL FUND RAISERS

BINGO

Bingo is the newest fund raiser that started in November 2005. LCHS Band Boosters sponsor bingo every Sunday afternoon at Rose Mack bingo hall on 13 Mile Road, East of Little Mack in Roseville. Doors open at 10:30 a.m. and starting time is 12:30 p.m. We offer a great program with \$2,800 house, progressive jackpot and charity game tickets.

You can help support the band by coming and playing bingo on Sunday afternoon, or you can volunteer to help out (it's easy and it's a lot of fun). Student accounts will be credited \$30 for each time a parent helps out from 10:30 a.m. to the end of the bingo session (approximately 4:00 p.m.) Please note that according to State law all bingo participants and volunteers must be 18 years or older, so students are not able to participate in this activity.

*Community Canister Day (formerly known as Tag Day) - Students stand in front of local businesses with canisters requesting donations. This is a great way for students to earn money for their student activity account without having to sell something.

*Kroger Gift Cards – Purchase Kroger gift cards from the Band Boosters – used same as cash with a percentage going into students activity account. These cards are rechargeable and can be used over and over again, accumulating more money in the student's activity account.

*Meijer Community Rewards – Sign up for a Meijer card and a percentage of your purchases are credited to the Band Boosters.

*Scrip Program – Gift certificates from national and local retailers. Gift certificates are sold to organizations at a discount, families purchase gift certificates at full face value – profit is divided between student's activity account and the Band Boosters.

Spring Flower Sales – this fund raiser starts each April with flower delivery early May (before Mother's Day). Incoming freshmen at welcome to participate

Entertainment Books, Bowling Night, Little Caesars Pizza Kits, Pancake Breakfast, Spaghetti Dinner, Cookie Dough, Pizza Hut Night is some of the other fund raisers.

(* These fund raisers **do not require selling any merchandise**)

I HATE FUND RAISERS – CAN I JUST WRITE A CHECK?

YES! You can write a check payable to L'Anse Creuse High School Band Boosters and your donation is tax deductible (as long as no merchandise is received in exchange for your donation).

OTHER BAND RELATED EXPENSES

“Oh no, not another band related expense!” That was a direct quote from a freshman parent. Oh, how naïve she was, thinking that the only expense was band camp! The purpose of this section of the handbook is to ease the shock of expenses related to High School band and to help you budget and/or plan your fund raising activities.

The majority of expenses are related to marching season (August – November). Listed below is a sampling of expected costs associated with High School band, (costs may be subject to change) Please remember one very important thing – **the experience and memories you and your child will have in High School band are priceless!**

- Band Camp (\$295) plus uniform fee of \$50 for all returning members and \$75 for new members. This fee incorporates the cost of show shirt for returning members and includes marching shoes for new members. This fee also includes the dry cleaning costs and maintenance.
- Marching shoes (replacements)
- Show shirt (new shirt each season worn for each marching competition and other band activities. Parents often order a shirt for themselves and wear them at competitions to show support.
- Gloves, black socks
- Tuxedo shirt (concert season)
- Dry cleaning fees – marching band uniform (covered by band camp fee) and concert uniform (not covered by prepaid fee)
- Admission fee to competitions (for parents and siblings)
- Admission fee to football games. Season passes may be purchased from the Athletic Boosters.

- Competition Programs
- Food and refreshment money for students at the competitions (also for parents who attend)
- School sponsored band pictures
- Pictures, DVD's & videos sold at State Finals
- Lancer souvenirs such as hoodies, sweatshirts, hats, etc.
- Band Banquet
- Solo & Ensemble entry fees
- Donations of bottled water, fruit or money to purchase them.

BAND TRIPS

Approximately every two years the band goes on a major trip. Participation is optional and students may use fund raising activities to help offset the cost of the trip. The band went to Disney World in Florida in spring of 2007 and Hawaii in the spring of 2005. These trips are open to all band students, their families and extended families.

ADDITIONAL INFORMATION & RESOURCES

(or, how do I find out about what is going on other than relying on my child to bring home information!)

The Band Director and the Band Boosters post information about upcoming events, fund raisers, rehearsals, band camp, etc., in the band room. The wall adjacent to the director's office has slots for flyers, forms and notices. Parents have been observed staring at the wall of notices muttering "I didn't know about that!" Note to new freshman parents – yes, students are actually given information about upcoming events, but somehow it gets lost once they leave the band room! The Director and Boosters do have periodic bulk mailings; however, they are expensive and time consuming.

There is also a lock box in the Directors office that can be used for dropping off payments, requesting Kroger gift cards or other confidential or secured correspondence. The box is checked regularly and contents distributed to the appropriate person.

SO HOW CAN YOU BE KEPT INFORMED?

- Visits to the band room (more frequent during marching season). The band room is open after school hours and occasionally into the evening depending on after school activities and lessons.
- **ATTEND MONTHLY BAND BOOSTER MEETING** (first Thursday of each month at 7:15 p.m., September through June)
- Visit the L'Anse Creuse High School Band website at: www.lchsbands.net Check out the Band Booster section, calendar, as well as browse the various links for other helpful information.
- Contact by telephone or email a band staff member or any band booster (see directory at the end of booklet).
- Harass and nag your child, however, this method of obtaining information is the least successful.

Most importantly, remember that every single band parent was once lost and overwhelmed! **Those parents who seem to know what is going on are that way because they have gotten involved** – involved with the band and therefore involved with their kids. Those are the same parents who have smiles on their faces, pride in their hearts, occasional tears in their eyes and who at the end of a concert or marching competition profess that being a band parent is an incredibly rewarding experience and worth all the time and energy.

That pride and joy can be yours – become involved!



BAND CAMP CHECKLIST
INSTRUMENT, BEDROLL OR SLEEPING BAG (+ ONE SHEET), ONE SUITCASE
ONE CARRY-ON FOR THE BUS
NAME TAGS ON ALL SUITCASES, BAGS, AND AS MANY PERSONAL ITEMS AS POSSIBLE
NO GLASS!

- \$\$\$MONEY\$\$\$ (DJ, LUNCH TO AND FROM CAMP, SNACKS)
- ALARM CLOCK
- ANTI BACTERIAL OINTMENT
- BAND-AIDS, BLISTER PADS (NON-MEDICATED)
- BEDROLL (SHEET, 1 OR BLANKETS)
- BOOKS, ELECTRONIC GAMES, BATTERIES
- BUG REPELLANT
- CAMERA, FILM
- CD PLAYER, CD'S, BATTERIES
- DEODORANT
- EYEGLASSES, CONTACTS & SUPPLIES
- FEMININE HYGIENE PRODUCTS
- FLASHLIGHT, BATTERIES
- GYM SHOES (2 PAIRS - BROKEN IN!)
- HAIR ACCESSORIES (SCRUNCHEES, ETC.)
- HAIR BRUSH
- HAIR DRYER
- HAT, VISOR
- INSTRUMENT AND SUPPLIES
- JACKET/HOODIE
- KLEENEX TISSUES
- LAUNDRY BAG
- LIP BALM (NOT CARMEX OR CAMPHOR)
- LONG PANTS (NO JEANS)
- TOILET PAPER AND PAPER CUPS
- LONG SLEEVE SHIRT (IN CASE OF SUNBURN)
-
-

- LYRE, FLIP FOLDER
- MEDICATIONS, VITAMINS, ETC.
- MUSIC, SUPPLIES
- PENCILS, HIGHLIGHTER
- PILLOW
- PJ'S
- RAIN GEAR (PONCHO, ETC.)
- SANDALS (FOR SHOWER)
- SHORTS, TOPS (NO BATHING SUIT TOPS)
- SLEEPING BAG, SHEET
- SNACKS FOR THE BUS (NO GLASS!)
- SOAP, SHAMPOO
- SOCKS (2 PR./DAY)
- SUNGLASSES
- SUNSCREEN
- SWEATSHIRT
- SWIMSUIT (FOR THE LAKE!)
- T-SHIRTS, TANK TOPS
- TOOTHBRUSH, TOOTHPASTE
- TOWELS, WASH CLOTHS
- TYLENOL/MOTRIN/BENADRYL, ETC.
- UNDERWEAR
- WATCH
- WATER COOLER
-
-
-

DON'T FORGET YOUR ENTHUSIASM AND DEDICATION!!



2007/2008 LCHS BAND STAFF DIRECTORY

Name	Title	Telephone Number	Email Address
Russell S. Hilton	Director of Bands	783-6400, Ext. 2179	hiltoru@lc-ps.org
Russell S. Hilton	Director of Bands	Cell: 586-801-8096	
Adam T. Kosi	Associate Director of Bands	783-6400, Ext. 2179	kosiad@lc-pc.org
Patrick Conaton	Assistant Director	783-6400, Ext. 2170	
Ralph Biggs	Percussion	260-7789	snare5@aol.com
Jamie Serafano	Color Guard Instructor	216-5458	jserafano@yahoo.com
Laura Skok	Pitt Instructor	493-5620, Ext. 2495	skoklau@lc-pc.org
Jason Ihnat	Pitt Instructor	783-6400, Ext. 2170	cbcpit@aol.com

2007/2008 LCHS BAND BOOSTER DIRECTORY

Gloria Zalewski	President	463-0698	electrek_z@yahoo.com
Kathy Troia	Vice President	469-0966	tntinteriors@hotmail.com
Larry Dishman	Treasurer	790-6654	ldishman@ford.com
Geri Prichard	Treasurer-Activity Accounts	463-8537	geriprichard@yahoo.com
Gail Sellers	Recording Secretary	783-3996	gs1955@wowway.com
Pat Yee	Correspondence Secretary, Bingo, Chaperones	468-3411	info@facialart.net
Chris Hishon	Raffle Tickets	296-5697	chrishishon@sbcglobal.net
Kathy Turonek	Sewing	307-3037	turonek@wideopenwest.com
	Transportation		
	Props		
Louise Borkowski	Concert Uniforms	463-6388	llambork@sbcglobal.net
Sue Rosenthal	Marching Uniforms/Meijer Prog.	294-0272	sros@mcare.med.umich.edu
Christa Schapka	Kroger Gift Cards	466-4396	christa39241@wowway.com
Cindy Mullins	Scrip Program	790-0717	cinders10@wowway.com
Keely Final	Corporate Sponsorship	296-1182	thefordlord@att.net
Cindy Frink	Lancer Band Merchandise	465-1002	frinkfam4@yahoo.com
Carla Verkest	Embroidery Band Jackets	469-2766	
Linda Jozefiak	Brick Paver Project Leader	954-9154	ljoz3@msn.com